

Herriman

Lafayette Estates

Phase 1

12600 S 6000 W, Herriman

Coming Spring 2018! 0.23 - 0.35 Acres -\$10k to +\$5k



Gordon Milar: (801) 259-1800

Adam Bullock: (801) 472-0252

Ben Milar: (801) 205-7584

www.gordonmilarconstruction.com

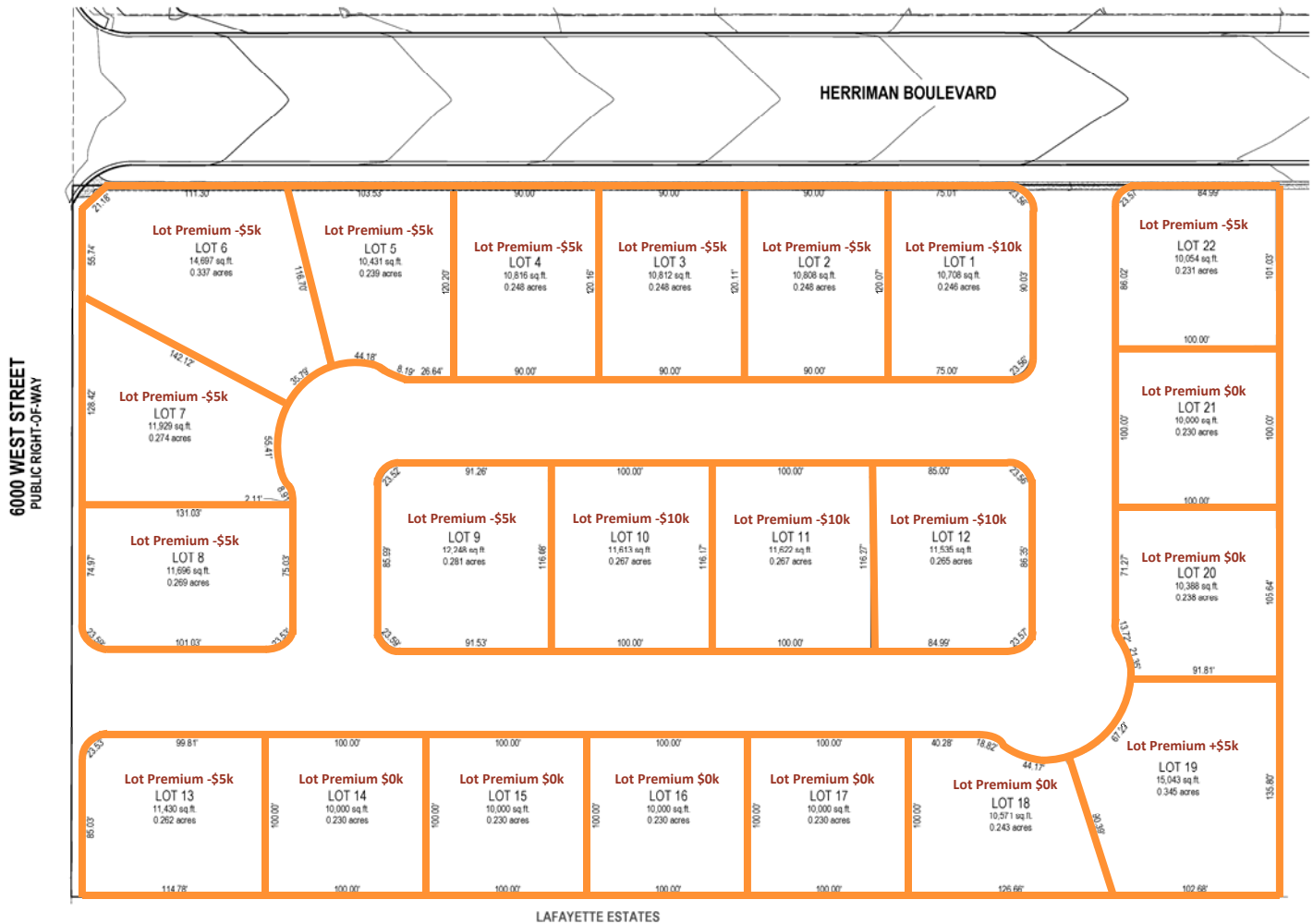
Herriman

Lafayette Estates

Phase 1

12600 S 6000 W, Herriman

Coming Spring 2018! 0.23 - 0.35 Acres -\$10k to +\$5k



NOTES (A1-ZC Zone)

Landscaping required for front yard prior to close

Minimum Setbacks (Typical)

- Front 25' at garage face
- Front 20' at other than garage face
- Sides total of 20' minimum of 8'
- Rear 20'

Possible shallow sewer depths

Coming Spring 2018!
Now taking reservations



Gordon Milar: (801) 259-1800
Adam Bullock: (801) 472-0252

Ben Milar: (801) 205-7584
www.gordonmilarconstruction.com